

March 20, 2020

Woodland Park School District e-Newsletter



Follow us on



Visit us online at wpschools.org
#ProudtobeWP

Important dates

Friday, March 20 - Second semester closes
for Charles Olbon School and Beatrice
Gilmore School

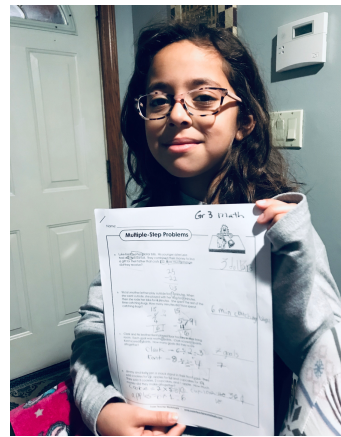
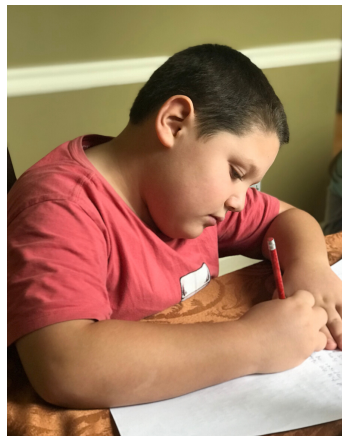
Monday, March 23, 7 p.m. - Board of
Education meeting at the Municipal Building

Friday, March 27 - Third marking period ends
at Memorial Middle School

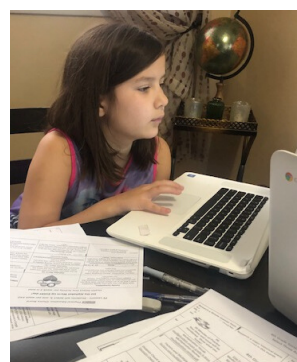
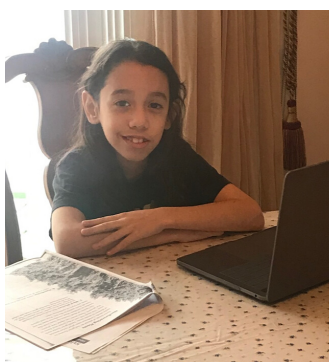
The Woodland Park School District e-Newsletter is sent out weekly when school is in session. It serves as a glimpse of some of the wonderful things going on in our schools, as well as a point of reference for upcoming events.

Your Partner in Education,
Michele R. Pillari, Ed.D., Superintendent of Schools

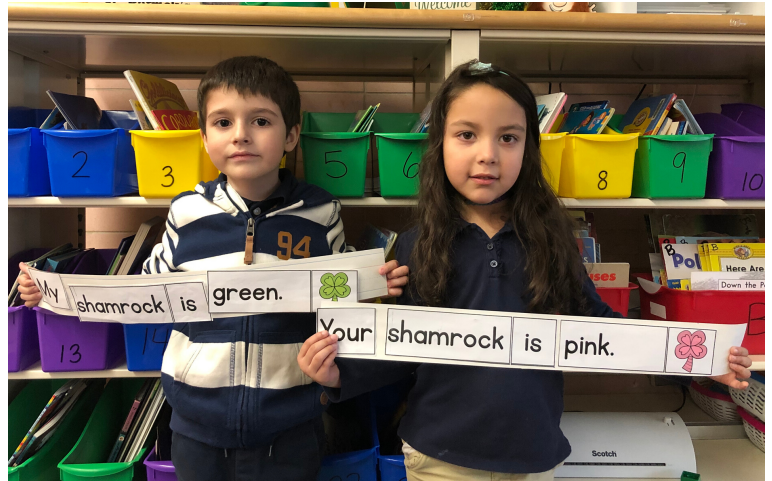
Scenes Of School At Home



Students at Beatrice Gilmore School are working to stay in touch with their teachers while working hard at home during the Coronavirus building shut down by sending photos and emails.



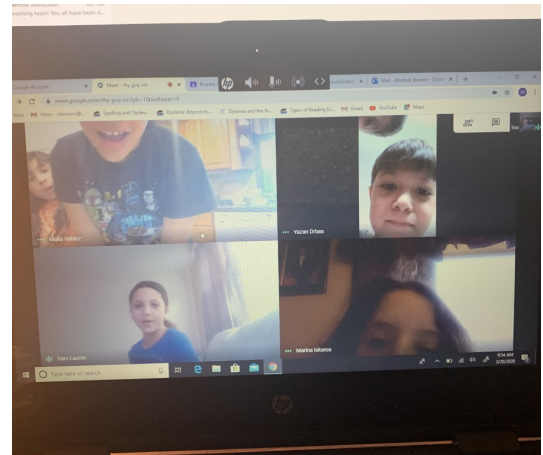
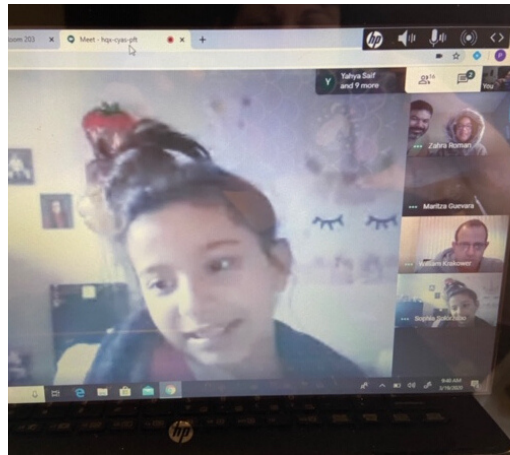
Shamrockin Sentences



Students in Ms. Odaman's kindergarten class at Charles Olbon School were hard at work last week learning how to build sentences.

Staying Connected

Beatrice Gilmore School students and teachers are working to stay connected via Google Meet calls, which can connect up to 25 people together at once. Students can "see" and "talk" with their teacher and peers.



Making Preparations

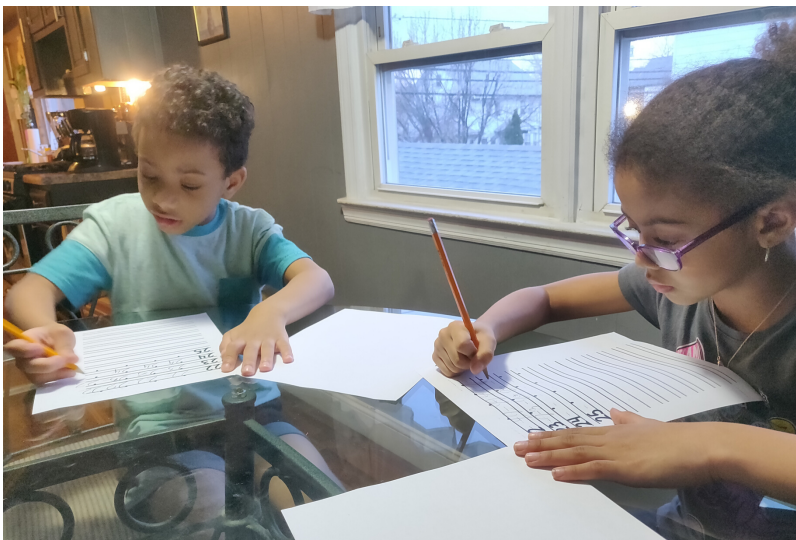


Staff members at Memorial Middle School held marathon prep sessions last week working to make meaningful instructional take-home packets for every student.

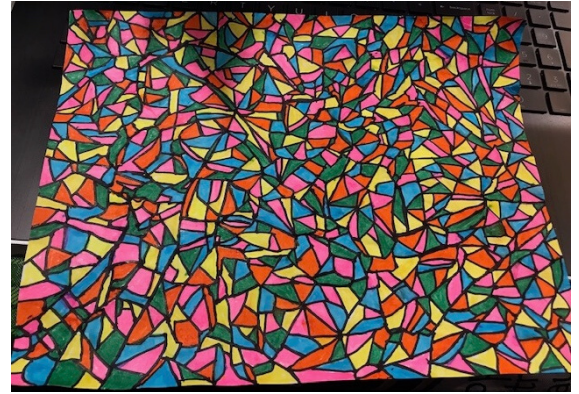


Hello From Home

Students at Charles Olbon School are working to stay in touch with their teachers while working hard at home by sending photos and emails.



Art Creations



Students at all three schools are also working on their specials while distance learning. Here are some of their creations.



While buildings are closed, food service is available for all students in the District. While this is open to all students, we are only serving from one location. Pick up “grab and go” style breakfast and lunch is at the entrance of Memorial School between 9 a.m. and 12 p.m. Monday to Friday. All are welcome.

Updates from the Borough:

As of Friday afternoon, the Borough has been alerted to five (5) positive COVID-19 tests of Woodland Park residents.

- A 21-year-old male who is asymptomatic and quarantined at home
- An 84-year-old male who is hospitalized
- A 74-year-old female who remains ill in home quarantine
- A 21-year-old male who is now asymptomatic and is recovering
- A 62-year-old healthcare worker who remains ill in home quarantine

It is anticipated that the number of positive cases will continue to rise as testing is more readily available. These increases should not create panic or overly alarm anyone. However, we must all take responsible actions. Residents are highly advised to stay home and practice social distancing if you need to go out, which is the only way to reduce your risk. Should you exhibit any symptoms of illness, consult your personal doctor to discuss treatment.

Borough & School District operations: The Municipal Building, Department of Public Works and the Alfred Baumann Library are closed to public access. Hours of operation (via telephone and email only): Municipal Building, 8:30 a.m. to 4 p.m.; Code Enforcement and DPW Office, 8 a.m. to 3:30 p.m.; Library, 8:30 a.m. to 4 p.m.

The Recycling Center will be open from 7 a.m. to 3:30 p.m. for drop-offs of recyclables.

Alfred Baumann Library: All group activities and programs are suspended; however, Library staff are available 8:30 a.m. to 4 p.m. by phone or email. The Library will be issuing temporary Library cards to residents; call 973-345-8120 for more information. All fines incurred during this time will be waived. Check www.abwplibrary.org for updates.

WP Boys & Girls Club: All games, practices programs, events and get-togethers at the Club are suspended.

These provisions will remain in effect **until further notice**. Please follow the Borough and School District Facebook pages and check www.wpnj.us and www.wpschools.org for continued updates.

Alfred Baumann Library creates virtual space for residents

The staff at the Alfred H. Baumann Free Public Library is working hard for the residents through this difficult time. The staff is available Monday through Friday, 8:30 a.m. to 4 p.m. to answer questions and help with digital materials. Even if you just need to hear a friendly voice – just give a call to 973-345-8120. The Library also installed a “chat” feature on its website that is available between 9 a.m. and 4 p.m.

The staff has been working hard to provide residents with helpful resources on its website, social media and its YouTube Channel. You will find fun storytimes, crafts, DIY, and much more for all ages. Each week, the librarians and staff will offer a virtual space called “Welcome to Library Land.” Each day there will be fun activity scheduled at 11 a.m. and a storytime at 2 p.m. and twice a week there will be something for tweens and teens on Mondays and Thursdays at 7 p.m. Although these are scheduled posts, they can be viewed at any time that fits into your day. Look for special guests from the community sharing their talents and skills.

The Library also offers numerous digital materials from Hoopla, Overdrive/Libby, RBDigital magazines, Tumblebooks for kids, World Book Encyclopedia, Pronunciator, Rosetta Stone and much more.

“We are here for each and every one of you,” said Library Director Linda Hoffman. “We miss seeing you in person, but we are here for you in every other capacity.”